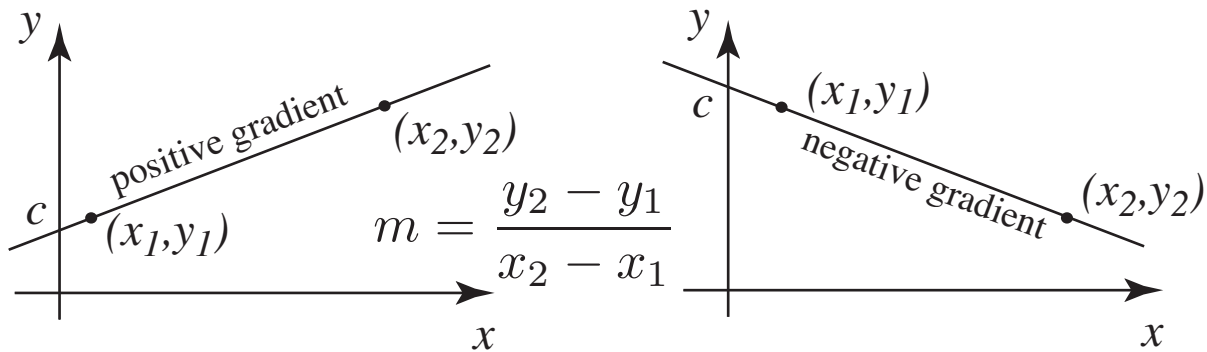


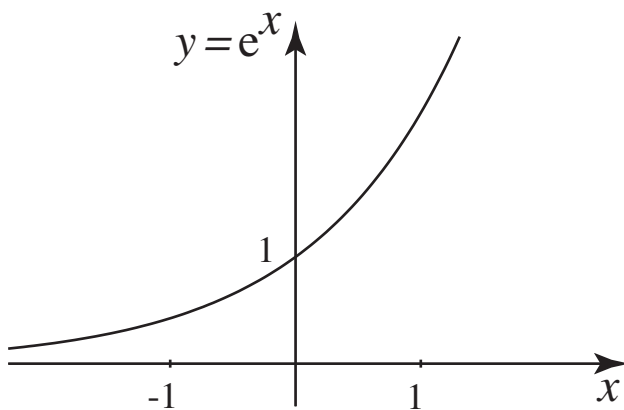
Graphs of common functions

Linear: $y = mx + c$, m =gradient, c = vertical intercept

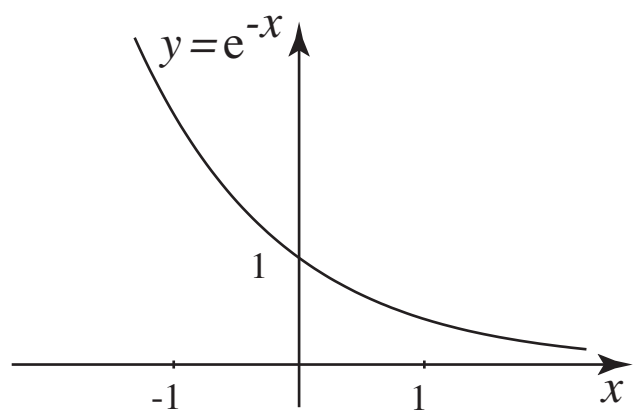


Exponential functions:

$e \approx 2.718$ is the exponential constant.

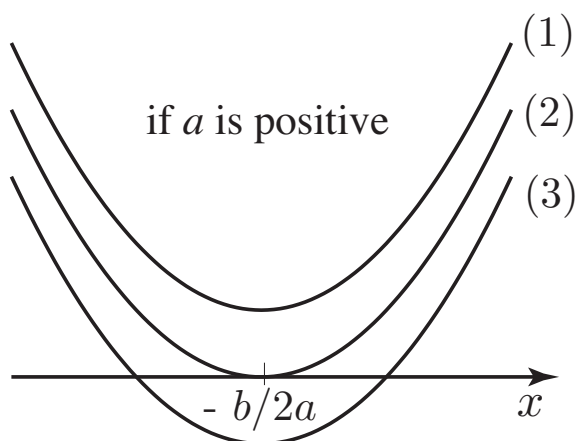


Graph of $y = e^x$ showing exponential growth

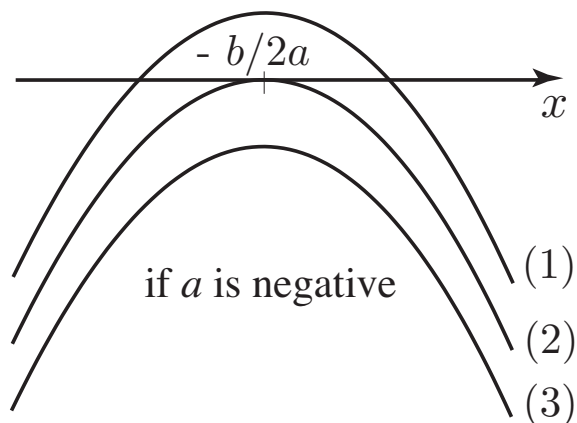


Graph of $y = e^{-x}$ showing exponential decay

Quadratic functions: $y = ax^2 + bx + c$

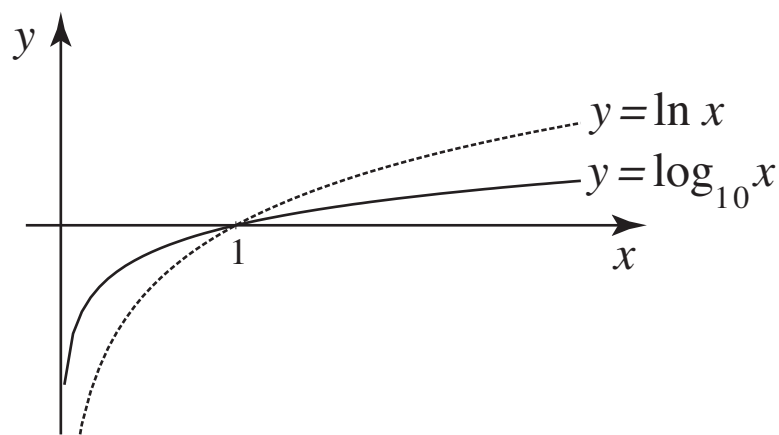


- (1) $b^2 - 4ac < 0$
- (2) $b^2 - 4ac = 0$
- (3) $b^2 - 4ac > 0$



- (1) $b^2 - 4ac > 0$
- (2) $b^2 - 4ac = 0$
- (3) $b^2 - 4ac < 0$

Logarithmic functions:



Graphs of $y = \ln x$ and $y = \log_{10} x$